

TECHNICAL BULLETIN

TB-046 • July 2010

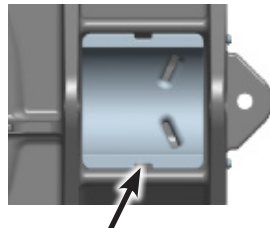
Ultra HR top plate to bracket installation instructions

SECTION I: HOLLAND KIT INSTRUCTIONS (KIT-PIN-UHR-H)

Note: HR cast bracket liners are to be used with Holland fifth wheel lower stationary and slide assemblies. See application guide for details.

1. Remove fifth wheel from mounting brackets (cleaning the fifth wheel before installing the kit is recommended).
2. Place the fifth wheel in the upside down position (make sure that the wheel is placed on a suitable work surface).

3. If necessary remove old HR bracket liner by using a flat screwdriver or appropriate prying tool (Figure 5).



Pry location

Figure 5

4. Ensure bracket pockets on wheel are clean and free of excess grease and debris.

5. Remove backing from double-sided tape strip on each new HR bracket liner (Figure 6).



Remove tape backing

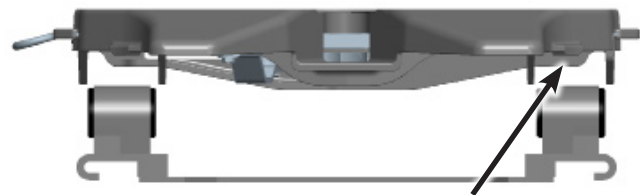
Figure 6

6. Insert HR bracket liner into Ultra HR fifth wheel noting orientation of locating boss and corresponding pocket in fifth wheel (Figure 7).



Figure 7

7. Press both HR bracket liners firmly into place to allow tape to adhere and keep the HR bracket liners in place when wheel is turned over for installation.
8. Install Ultra HR fifth wheel onto suitable Holland bracket assembly (Inspect the lower assembly for wear or damage and repair or replace per manufacturer's recommendations. Pay particular attention to bracket heads and bracket bushings or liners that are wear components and may be in need of replacement.) and install bracket pins, bracket pin retainers, and retainer clips (Figure 8). See application guide for details.



Lower the wheel onto the bracket assembly ensuring bracket liners are in place.

Figure 8

See other side for FFW installation

Holland is a registered trademark of SAF Holland, Inc and is used here for informational purposes only.

**SECTION II: FONTAINE KIT INSTRUCTIONS
(KIT-PIN-UHR-F)**

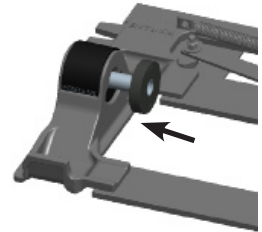
Note: Fontaine kit is to be used with Fontaine fifth wheel lower stationary and slide assemblies. See application guide for details.

1. Remove fifth wheel from mounting brackets (cleaning the fifth wheel before installing the kit is recommended).
2. Place the fifth wheel in the upside down position (make sure that the wheel is placed on a suitable work surface).
3. If the HR kit cast bushings are installed remove them as described in Section I of this bulletin otherwise proceed to step 4.
4. Ensure bracket pockets on wheel are clean and free of excess grease and debris.
5. Ensure bracket heads on lower assembly are clean and free of excess grease and debris.

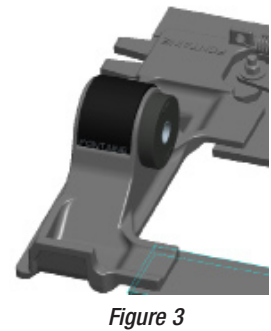
6. Apply a light coat of standard grease or assembly lubricant to outside of insert shaft (Figure 1). This will ease insertion of kit.



7. Install Fontaine bracket spacer into each side of appropriate Fontaine lower assembly mount (Figure 2). See application guide for details.



8. Ensure that Fontaine bracket spacers are fully inserted and flush with inside of bracket (Figure 3). This is necessary for proper fitment of Ultra HR fifth wheel.



9. Install Ultra HR fifth wheel onto Fontaine bracket assembly and install bracket pins, bracket pin retainers, and retainer clips (Figure 4).

