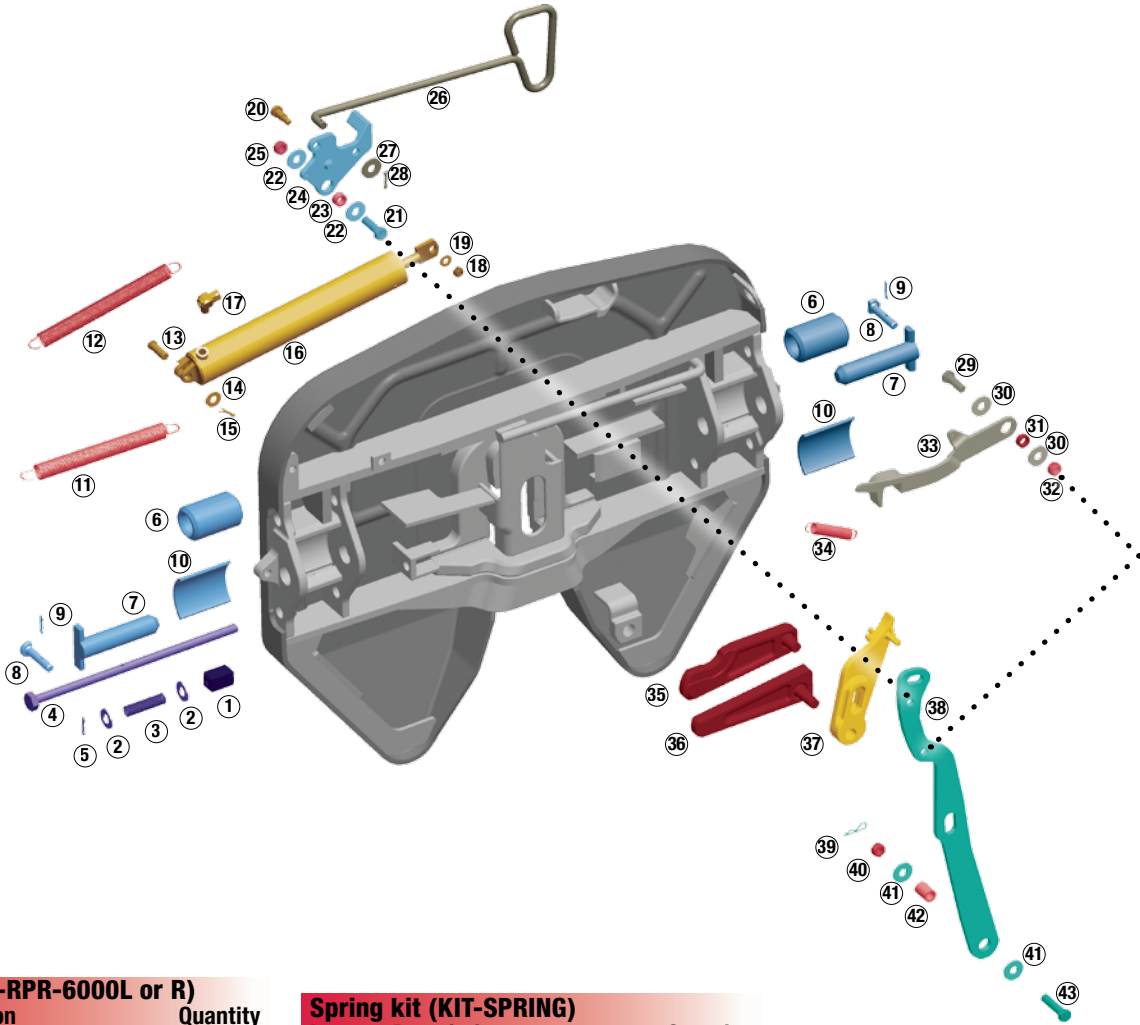


Ultra NT rebuild diagram



Rebuild kit (KIT-RPR-6000L or R)

Item	Description	Quantity
11	Bumper spring	1
12	Handle spring	1
34	Timer spring	1
35	Step jaw	1
36	Wedge	1
23	Bushing, 7/16"	1
31	Bushing, 5/16"	1
42	Bushing, 1 1/4"	1
25, 32, 40	Hex lock nut, 1/2" - 13	3

Wedge-stop rod kit (KIT-ROD-1108)

1	Wedge-stop rod nut	1
2	Flat washer, 5/8" I.D.	2
3	Wedge-stop rod spring	1
4	Wedge-stop rod	1
5	Cotter pin, 3/16" x 1"	1

Bracket pin kit (KIT-PIN-UNT)

6	1-piece bushing	2
7	Bracket pin	2
8	Bracket retainer pin	2
9	Cotter pin	2
10	Bracket Liner	2

Secondary lock kit (KIT-LAT-6000L or R)

12	Handle spring	1
21	Hex head bolt, 1/2" - 13	1
22	Flat washer, 1/2" I.D.	2
23	Bushing, 7/16"	1
24	Secondary lock	1
25	Hex lock nut, 1/2" - 13	1
28	Cotter pin, 3/16" x 1"	1

Spring kit (KIT-SPRING)

Item	Description	Quantity
11	Bumper spring	1
12	Handle spring	1
34	Timer spring	1

Bumper kit (KIT-BPR-6000L or R)

32	Hex lock nut, 1/2" - 13	1
30	Flat washer, 1/2" I.D.	2
31	Bushing	1
29	Hex head bolt, 1/2" - 13	1
33	Bumper	1
11	Bumper spring	1

Timer kit (KIT-TMR-6000L or R)

34	Timer spring	1
37	Timer	1
40	Hex lock nut, 1/2" - 13	1
39	Hair pin cotter	1

Operating handle kit (KIT-OPR-6000)

23	Bushing, 7/16"	1
31	Bushing, 5/16"	1
42	Bushing, 1 1/4"	1
25, 32, 40	Hex lock nut, 1/2" - 13	3
40	Flat washer, 1/2" I.D.	2
43	Hex head bolt, 1/2" - 13	1
38	Operating handle	1
39	Hair pin cotter	1

Pull handle kit (KIT-PUL-6000L or R)

26	Pull handle	1
27	Flat washer, 1/2" I.D.	1
28	Cotter pin, 3/16" x 1"	1

Air actuated kit (KIT-AA-6000 L or R)

This kit includes the parts mounted to the fifth wheel. If you are upgrading from manual to air actuated you will also need KIT-AIR-DASH which includes the parts required to complete the in-dash installation.

Item	Description	Quantity
13	Pin	1
14	Flat washer	1
15	Cotter pin	1
16	Air cylinder	1
17	Mini-matic jumbo exhaust valve	1
18	Hex lock nut	1
19	Flat washer	1
20	Shoulder bolt	1

KIT-AIR-DASH

