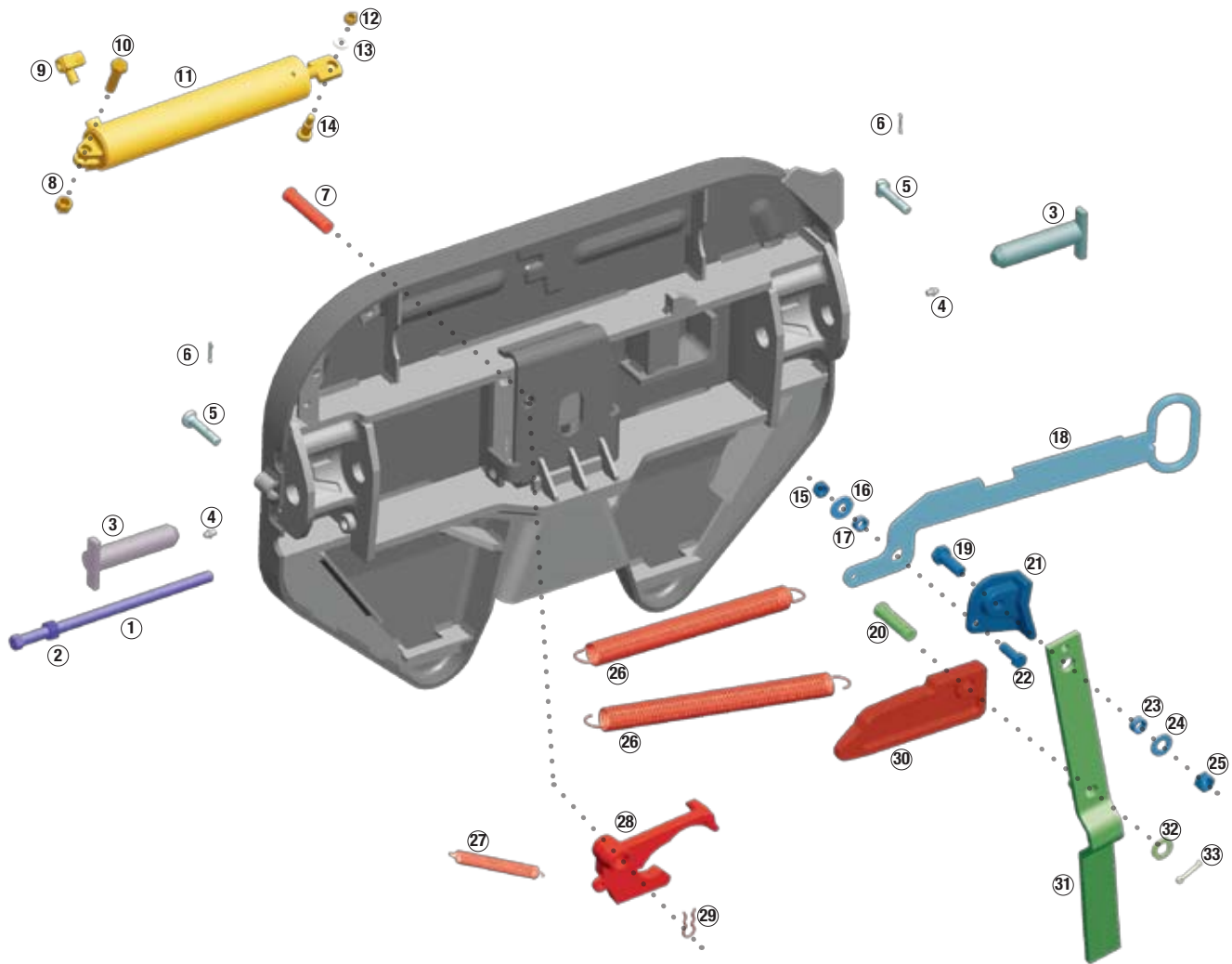


# Ultra LT rebuild diagram



### Repair kit (KIT-RPR-UL-L)

Item	Description	Quantity
7	Pivot pin, long	1
20	Pivot pin, short	1
25	Lock nut, 5/8"-11	1
26	Main spring	2
27	Jaw spring	1
28	Rotating locking jaw	1
29	Pivot pin clip	2
30	Locking wedge	1
32	Washer, 3/4"	1
33	Cotter Pin	1

### Spring kit (KIT-SPR-ULHH)

26	Main spring	2
27	Jaw spring	1

### Adjuster rod kit (KIT-ROD-UL)

1	Adjustment rod	1
2	Adjustment rod nut	1

### Secondary lock kit (KIT-SEC-ULHH-L)

Item	Description	Quantity
15	Lock nut, 1/2"-13	1
16	Washer, 1/2"	1
17	Bushing, 5/16"	1
19	Hex head bolt, 5/8"-11 x 1.75"	1
21	Secondary lock	1
22	Hex head bolt, 1/2"-13 x 1.5"	1
23	Spacer bushing	1
24	Washer, flat 5/8"	1
25	Lock nut, 5/8"-11	1

### Operating lever kit (KIT-OPR-UL)

19	Hex head bolt, 5/8"-11 x 1.75"	1
20	Pivot pin, short	1
23	Spacer bushing	1
24	Washer, flat 5/8"	1
25	Lock nut, 5/8"-11	1
31	Operating handle	1
32	Washer, 3/4"	1
33	Cotter Pin	1

### Air cylinder kit (KIT-AA-UL-L)

Item	Description	Quantity
8	Lock nut, 1/2"-13	1
9	Exhaust valve	1
	Quick disconnect (not pictured)	1
10	Hex head bolt, 1/2"-13 x 1.75"	1
11	Air cylinder	1
12	Lock nut, 3/8"-16	1
13	Washer, 3/8"	1
14	Shoulder bolt, 3/8"-16	1
26	Main spring	1

### Mounting pin kit (KIT-PIN-UL)

3	Bracket pin	2
5	Bracket retainer pin	2
6	Cotter pin	2
	Bracket bushing (not pictured)	2

### Pull handle kit (KIT-PUL-UL-L)

15	Lock nut, 1/2"-13	1
16	Washer, 1/2"	1
17	Bushing, 5/16"	1
18	Pull handle	1
22	Hex head bolt, 1/2"-13 x 1.5"	1



# Ultra LT rebuild diagram key

Item	Description	Quantity
①	Adjustment rod	1
②	Adjustment rod nut	1
③	Bracket pin	2
④	Grease fitting	2
⑤	Bracket retainer pin	2
⑥	Cotter pin	2
	Bracket bushing (not pictured)	2
⑦	Pivot pin, long	1
⑧	Lock nut, 1/2"-13	1
⑨	Exhaust valve	1
	Quick disconnect (not pictured)	1
⑩	Hex head bolt, 1/2"-13 x 1.75"	1
⑪	Air cylinder	1
⑫	Lock nut, 3/8"-16	1
⑬	Washer, 3/8"	1
⑭	Shoulder bolt, 3/8"-16	1
⑮	Lock nut, 1/2"-13	1
⑯	Washer, 1/2"	1
⑰	Bushing, 5/16"	1
⑱	Pull handle	1
⑲	Hex head bolt, 5/8"-11 x 1.75"	1
⑳	Pivot pin, short	1
㉑	Secondary lock	1
㉒	Hex head bolt, 1/2"-13 x 1.5"	1
㉓	Spacer bushing	1
㉔	Washer, flat 5/8"	1
㉕	Lock nut, 5/8"-11	1
㉖	Main spring	1
㉗	Jaw spring	1
㉘	Rotating locking jaw	1
㉙	Pivot pin clip	1
㉚	Locking wedge	1
㉛	Operating handle	1
㉜	Washer, 3/4"	1
㉝	Cotter Pin	1